

Driller Toggle™

Heavy-Duty Screw-in Anchor

NEW & IMPROVED
GREATER LOAD
CAPACITY

▶ EASY

Screws directly into drywall

▶ FAST

No pre-drilling

▶ STRONG

Toggle grips behind wall for superior holding power

▶ 3 SIZES

1/8", 3/16", 1/4"
The 3 most popular toggle sizes

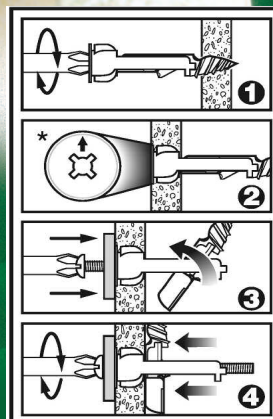
Use In:
3/8", 1/2" & 5/8"
Drywall.

Kits Include:
#2 or #3 Phillips
Power Bit.



DrillerToggle™		Load Capacity		
			MAX.**	MAX.**
1/8"	#2 Phillips	3/8"	90 Lbs	150 Lbs
		1/2"	110 Lbs	190 Lbs
		5/8"	180 Lbs	300 Lbs
3/16"	#2 Phillips	3/8"	100 Lbs	160 Lbs
		1/2"	120 Lbs	210 Lbs
		5/8"	200 Lbs	330 Lbs
1/4"	#3 Phillips	3/8"	110 Lbs	170 Lbs
		1/2"	130 Lbs	220 Lbs
		5/8"	230 Lbs	360 Lbs

**For safety reasons, installed weight should not exceed 25% of the max. load capacity.



For maximum load capacity, arrow should point upward.



Driller Toggle™ U.S. Patent No. 6,250,865, other patent pending
L.H. Dottie Co. 6131 S. Garfield Ave. Commerce, CA 90040 lhdottie.com

